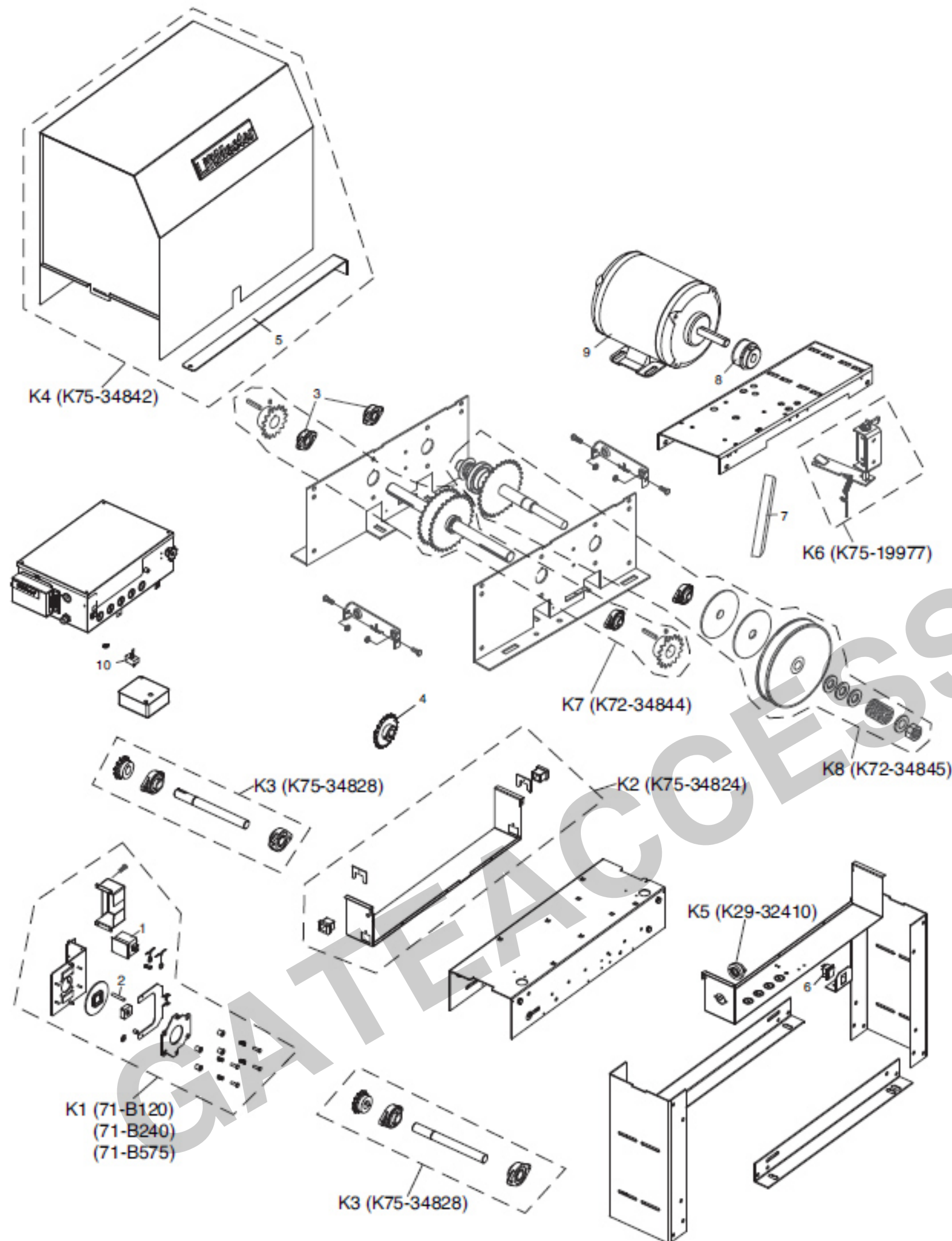
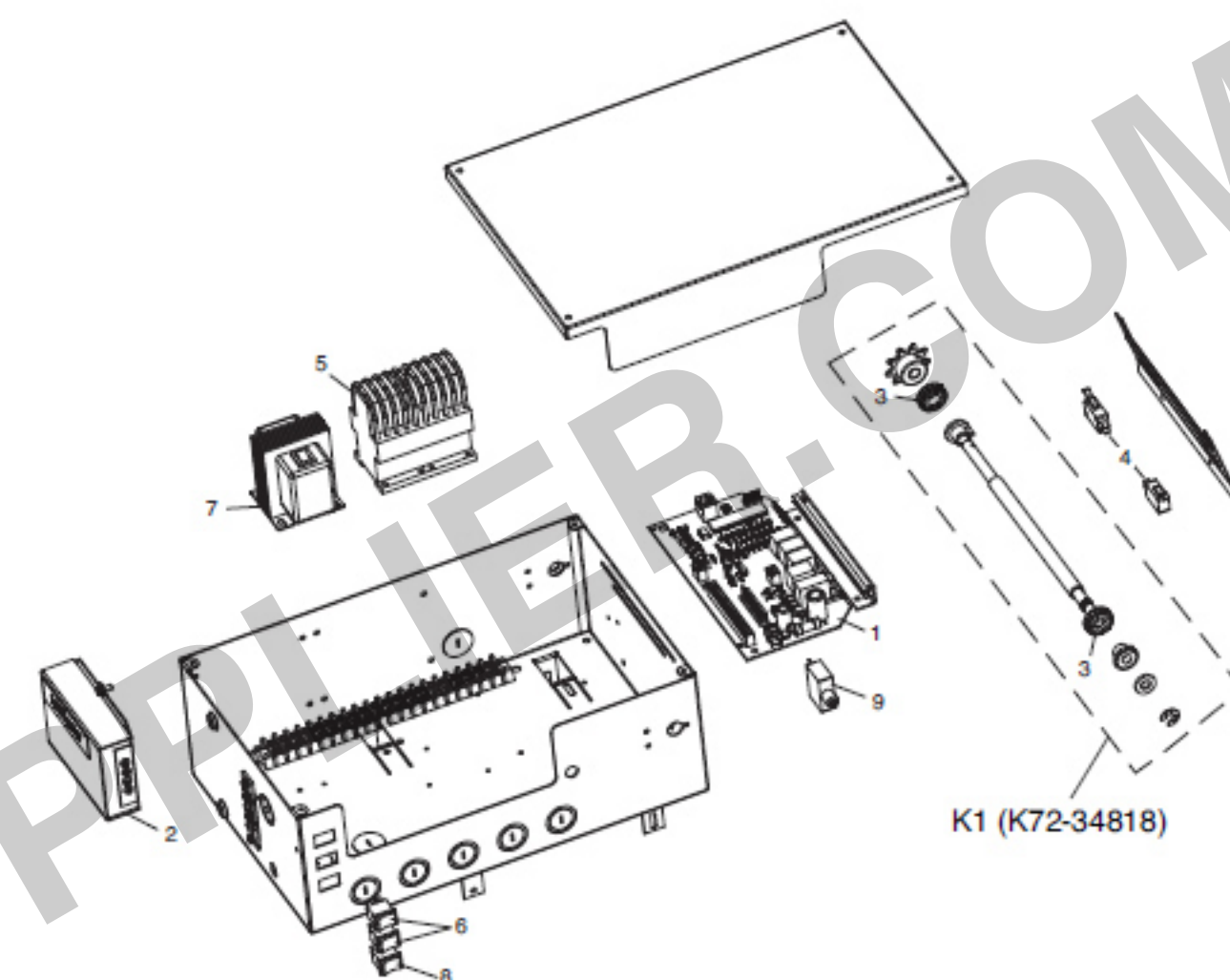


ILLUSTRATED PARTS



ELECTRICAL BOX



INDIVIDUAL PARTS

ITEM	PART #	DESCRIPTION
1	K001A5566	Control board
2	312HM	Radio - 315 MHz
3	13-10024	Limit nut
4	23-10041	Limit switch
5	03-8024-K	Contactor
6	23-34822	Open/close switch
7	21-3260-1	Transformer
		-115/208/230/460Vac/60VA
	21-10298-1	Transformer - 575Vac/100VA
8	23-30716	Stop switch
		VARIABLE PARTS
9	25-2006	Overload - 6 AMP - SL575-50-21, SL575-50-81
	25-2008	Overload - 8 AMP - SL575-75-21, SL575-75-81, SL575-100-21, SL575-100-81
	25-2010	Overload - 10 AMP - SL575-50-11
	25-2015	Overload - 15 AMP - SL575-100-11
	25-4002-SK	Overload - 1.8 to 2.6 AMP - SL575-100-53
		(NOT SHOWN)
	K74-18379	RPM Sensor (Hall effect)

SERVICE KITS

ITEM	PART #	DESCRIPTION
K1	K72-34818	Limit shaft kit Complete with: Limit shaft, limit nuts, limit bearings, limit sprocket, shim washers, compression ring, roll pin and e-ring.

*To order a complete replacement electrical box kit contact technical support at 1-800-528-2806.

*Non stocked item. Please allow additional delivery time.